

Recommended Screws For GeoDeck® Composite Decking



Screw Profile	Tongue & Groove AND Traditional	Commercial GeoDeck
FIN/Trim™ Trim Screw	8 x 2-1/2"	9 x 3 1/8"
RT Composite™ Trim Screw	AND 9 x 2-1/2"	

Both Screw Profiles available in Climatek™ Coated Steel
and PHEINOX™ Stainless Steel



Stainless Screw Profile	Tongue & Groove AND Traditional	Commercial GeoDeck
"Swaneze" Trim Screw - Square Drive	7 x 2 1/2"*	7 x 3"* 9 x 3 1/2"
"Swaneze" Trim Screw - 6-Lobe Drive	7 x 2 1/2"* 8 x 2 1/2"	7 x 3"*

* Pending ICC-ES Approval

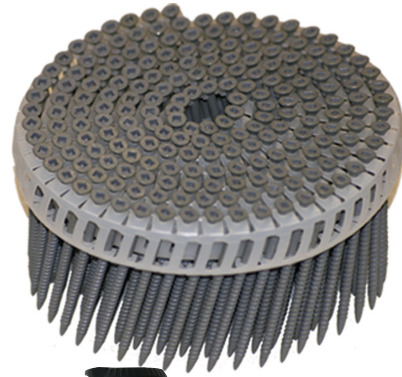
Recommended Pneumatic Fasteners For GeoDeck® Composite Decking



**Universal Fastener
Outsourcing, LLC**

BALLISTIC NAILSCREWS®

- PT2000® Coated & Soon Stainless
- All Four GeoDeck Colors Available
- Works Great in Hitachi Nailer



Recommended Hidden Fasteners For GeoDeck® Composite Decking

Tiger Claw®
Hidden Deck Fasteners P/N TC-3S



The Hidden Link®
HIDDEN DECK FASTENING SYSTEM



GRKFASTENERS™, ÜberGrade™, Climatek™, Pheinox™, Fin/Trim™, RT Composite™ and LOGO are trademarks of GRK Canada Limited
Simpson Strong-Tie and LOGO are registered trademarks of Simpson Strong-Tie Company, Inc.
BALLISTIC NAILSCREWS®, PT2000®, PT2000PLUS®, & UFO LOGO are registered trademarks of Universal Fastener Outsourcing, LLC
Hitachi is a registered trademark of Hitachi Koki Company, Ltd.
Tiger Claw Hidden Deck Fasteners and LOGO are registered trademarks of Tiger Claw, Inc.
Hidden Link DECK FASTENING SYSTEM and LOGO are registered trademarks of Pan American Screw, Inc.

TECHNOTES

GeoDeck®

